



Automation for Convenience

www.nakshtechnology.com



About Us

NAKSH TECHNOLOGY came into existence with the vision of playing an indispensable part in the global supply chain. This is achieved on the basis of the three combinations – Delivery on time, ultra-modern technology and the finest quality.

As a Supplier, we strive day and night to bring out fresh ideas to cater to the needs of Automation by offering Siemens Automation Products like Siemens AC Drive, Siemens PLC, Siemens HMI, Siemens Servo System, Simotion Controller and many more.

As a worldwide leading Supplier of Pepperl+Fuchs industrial sensor technology and sensor systems, we specialize in the field of Factory Automation with an extensive range of products that are easily adapted to specific applications.

Certification in accordance with ISO 9001 ensures that our products meet the highest quality demands.

Our staff have a solid product and application knowledge and can adapt ideally to your requirements.



Target Markets

- ◆ Pharma Industries
- ◆ Textile and Packaging Industries
- ◆ Food Beverages and Water Treatment
- ◆ Machine and Plant Engineering
- ◆ Plastic and Paper Industry
- ◆ Process Equipment Doors and Gates
- ◆ Chemical and Ceramic Industries
- ◆ Crain & Elevators Application
- ◆ Steel & Heavy Industries
- ◆ Automotive Industry
- ◆ Renewable Energy
- ◆ FMCG INDUSTRIES
- ◆ Material Handling
- ◆ Oil & Gas Industries
- ◆ Converting & Extrusion Industries
- ◆ Road construction Industries
- ◆ Power Plant
- ◆ Glass Industry



We have excellent range of Siemens PLC S7 which have an excellent designs and they provide a high quality of integration between the controllers and provide an effective performance to the clients. It offers very accurate and precise carrying out of the automation tasks.

Siemens PLC has been design with maximum flexibility to fit your individual machine requirement .its allows you to custom design your controller systems to meet your need.

The TIA Portal allows you to reduce your engineering time by 40%.

We ensure the complete range conforms to international quality standards and accomplishes the complete requirement of the customers.

Features

- ◆ Scalable and flexible designs
- ◆ Cost-effective
- ◆ Reliable
- ◆ Redundancy & Fail Safe Operation
- ◆ Integrated Profinet&Profibus System
- ◆ Powerful compact
- ◆ Design is integrated safety oriented
- ◆ Easy installation and commissioning

We Offer

- ◆ Siemens S7-1200 PLC & Modules
- ◆ Siemens S7-1500 PLC & Modules
- ◆ Siemens S7-300 PLC & Modules
- ◆ Siemens ET200s System
- ◆ Siemens ET200sp System
- ◆ Siemens S7-200 Smart PLC & Modules
- ◆ Siemens S7-400 PLC & Modules
- ◆ Siemens Logo PLC & Modules



We have excellent range of Siemens variable frequency drive

It features state-of-the-art IGBT technology with pulse width modulation for extremely reliable and flexible motor operation. Comprehensive protection functions provide a high level of protection for the Power Module and the motor. Siemens offers a wide range of Power Modules for the most diverse drive requirements.

New interfaces and modules ensure drive components are ready for digitalization. The components are perfectly coordinated and can be used both as a standard system and as a customized solution to meet your individual needs.

The ready-to-connect drive units are easy to operate, and service is simple thanks to their transparent, modular design.

Features

- ♦ Scalable and flexible designs
- ♦ Reasonable price
- ♦ Reliable
- ♦ Integrated Profinet , Profibus ,USS & Modbus System
- ♦ PID Functionality for close looped systems
- ♦ One standard engineering for all drives
- ♦ SINAMICS is the drive for continuous processes with high speed and torque accuracy.
- ♦ High degree of flexibility and combinability
- ♦ Higher-level, standard safety concept

We Offer

- ♦ Siemens SINAMICS V20
- ♦ Siemens SINAMICS G120 standard inverters
 - Standard inverters 0.37kw to 250kw
- ♦ Siemens SINAMICS G120c
 - Pump, Fan & Compressor 0.37kw to 90kw
- ♦ Siemens SINAMICS Control Unit
- ♦ Siemens SINAMICS Operational Panel
- ♦ Siemens SINAMICS G120X & G120XA
 - HVAC, Water & Waste Water Application
- ♦ Siemens SINAMICS G130 Power Module & Value Cabinet
- ♦ Siemens SINAMICS G110 Inverter
- ♦ Siemens SINAMICS G110D & G120D



We have excellent range of Siemens Human Machine Interface (HMI). These HMI are made using latest technology. The product is well known among the clients for the high level of durability, excellent performance and the reliability which the product offers to the clients. This product is very easy to install and one of its best qualities is that it has a very simple configuration and is easy to operate.

The functionality of Siemens HMI is identical within a family of devices. Clients can select the optimal Display Size for your application and decide whether to operate it by means of a touch –screen and/or keys.

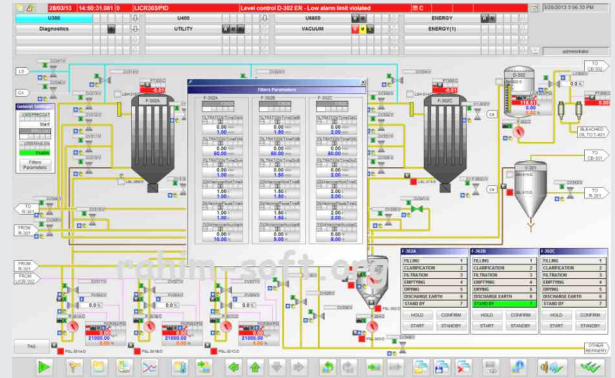
The new USB interface facilitates the connection of keyboard, mouse or barcode scanner and supports easy data archiving on a USB stick.

Features

- ♦ Widescreen displays with 16 million colors and LED backlighting
- ♦ Comprehensive high-end functionality: archive, VB scripts and various viewers for displaying system documentation (e.g. as PDF) or in the form of websites
- ♦ Data security in the event of a power failure
- ♦ Multiple interfaces for process communication
- ♦ Integrated PROFINET & PROFIBUS
- ♦ Programming from WinCC Comfort (TIA Portal)
- ♦ Innovative graphical user interface

We Offer

- ♦ Siemens SIMATIC Basic Panels 2ND Generation
- ♦ Siemens SIMATIC HMI Key Panels
- ♦ Siemens Basic Panels + Starter Kits
- ♦ Siemens SIMATIC HMI Comfort Panels 1st Generation
- ♦ Siemens SIMATIC Mobile Panels
- ♦ Siemens SIMATIC IOT 2000
- ♦ Siemens SIMATIC SD Memory Card



The right system for every application in every industry

With the SCADA system SIMATIC WinCC V7, Siemens offers an innovative, scalable process-visualization system with numerous high-performance functions for monitoring automated processes. Whether in a single-user system or a distributed multi-user system with redundant servers, the system offers complete functionality for all industries and features optimum openness.

With SIMATIC SCADA systems, you are fit for the future

Whether for a single operator station, multiple operator stations or complex solutions, whether for small or large plants - SIMATIC SCADA systems will grow with your plant.

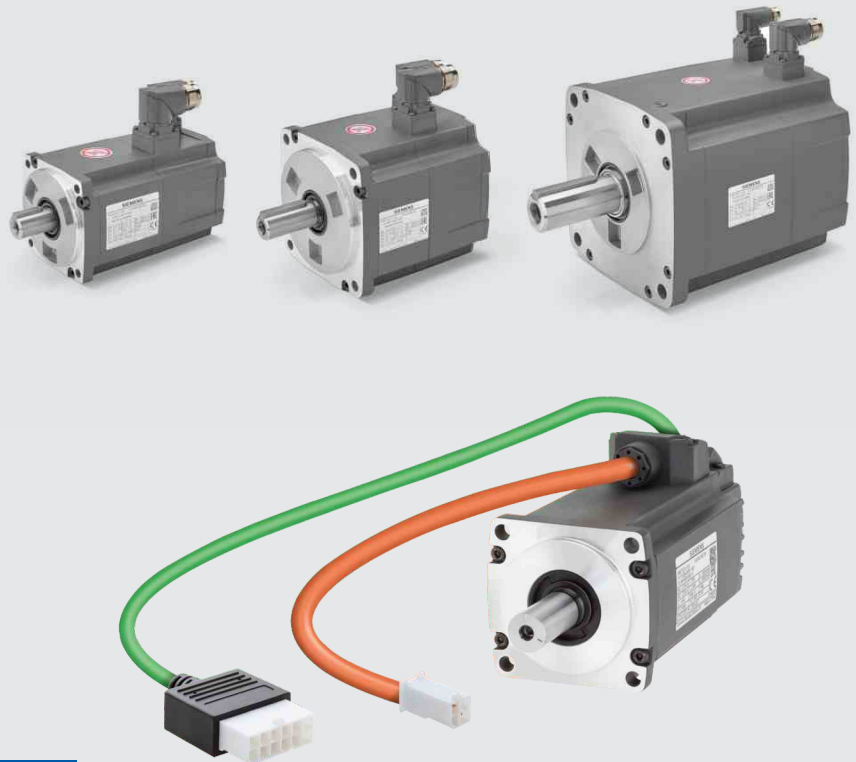
Siemens SCADA systems are scalable throughout the entire lifecycle, making it possible to expand existing systems at any time. That means investment security. Whether single-user systems, multi-user systems, or even widely distributed systems: you can use Siemens SCADA systems to visualize machines, lines, and entire plants and thus ensure transparency. As a result, you can identify optimization potential, minimize downtimes, and guarantee a short time-to-market.

Features

- ◆ Analog inputs for live monitoring. Analog inputs allow you to monitor real-time data across your network. ...
- ◆ Control relays (SBO points) for remote access and control. ...
- ◆ Graphical web interface. ...
- ◆ Meaningful alarm descriptions. ...
- ◆ Industrial-grade durability
- ◆ Alarm Handling
- ◆ Trend Curves Patterns
- ◆ Data Access and Retrieval
- ◆ Computer Networking and Processing

We Offer

- ◆ Siemens SIMATIC IPC 627 Series (Box PC)
- ◆ Siemens SIMATIC IPC 427 Series (Box PC)
- ◆ Siemens SIMATIC Industrial Flat Panel (IFP)
- ◆ TIA Portal WinCC Runtime Advance
- ◆ TIA Portal WinCC Runtime Professional
- ◆ TIA Portal WinCC Recipes + Data Logging
- ◆ TIA Portal Step7 Basic
- ◆ TIA Portal Step7 Professional



Siemens V90

The servo drive system comprises the basic SINAMICS V90 servo converter and SIMOTICS S-1FL6 servomotor. The system features eight converter frame sizes and seven motor shaft heights to cover a performance range from 0.05 kW to 7.0 kW for operation in single-phase and three-phase networks. Can be simply integrated via PTI, PROFINET, USS, Modbus RTU. The SINAMICS V90 servo drive system enables a wide range of simple Motion Control tasks to be implemented cost-efficiently and conveniently with the focus being on dynamic motion and processing.

Features

- ♦ Auto tuning enables machines to achieve a high dynamic performance
- ♦ Automatic suppression of machine resonances
- ♦ 1 MHz high-frequency pulse train input
- ♦ Multi-turn absolute encoder with 20-bit resolution
- ♦ Integrated control modes: Pulse train positioning, internal positioning, speed and torque control modes
- ♦ Integrated internal positioning function
- ♦ Integrated braking resistor in all frame sizes
- ♦ Integrated holding brake switch, no external relay necessary
- ♦ Wide voltage range 380 V ~ 480 V, -15% / +10%
- ♦ Transformer not required
- ♦ High quality motor bearings
- ♦ All motors have IP65 degree of protection and are equipped with oil seal
- ♦ Integrated safe torque off (STO)
- ♦ Easy servo tuning and machine optimization

We Offer

- ♦ SINAMICS V90 PN 200 V VARIANT
- ♦ SINAMICS V90 PN 400 V VARIANT
- ♦ SINAMICS V90 PTO 200 V
- ♦ SINAMICS V90 PTO 400 V
- ♦ 1FL6 servo motor – low inertia
- ♦ 1FL6 servo motor – high inertia
- ♦ Profinet Cable and Connector
- ♦ Encoder Cable
- ♦ Power Cable
- ♦ I/O interface Cable



S120 Drive

For single-axis drives, the line infeed and the power supply of the motor are combined in one device – the Power Module. For single-axis applications, the closed-loop drive control is handled by a special Control Unit (e.g. CU310-2) mounted on the Power Module; for multi-axis applications, using a Control Unit (e.g. CU 320-2) coupled via DRIVE-CLiQ. In the latter case, instead of the Control Unit, a CU adapter is mounted on the Power Module.

The drive is connected to a multi-axis Control Unit, e.g. CU320-2, using the CU adapter CUA31 via the DRIVE-CLiQ interface. This Control Unit then handles the drive functions for the AC-Drive. In this configuration, SINAMICS S120 AC-Drives can also be used in mixed operation with SINAMICS S120 multi-axis devices. This facilitates maximum flexibility when using SINAMICS S120 devices. In comparison to the CUA31, the CUA32 also has an integrated HTL/TTL encoder interface to connect an external encoder.

Features

- ◆ Handling equipment
- ◆ Automatic assembly machines
- ◆ Medical technology, such as examination tables or patient beds
- ◆ Feeders and delivery devices
- ◆ Tracking mechanisms, such as solar panels
- ◆ Tool changers
- ◆ Stacking units
- ◆ Pick-and-place tasks

We Offer

- ◆ Siemens S120 Control Unit
- ◆ Siemens S120 CF Cards & Licence
- ◆ Siemens S120 DCC Editors
- ◆ Siemens S120 Power Modules (Chassis Modules)
- ◆ Siemens S120 Basic Line Modules
- ◆ Siemens S120 Active Line Modules
- ◆ Siemens S120 Smart Line Modules
- ◆ Siemens S120 Single Motor Modules
- ◆ Siemens S120 Double Motor Modules
- ◆ Simotics 1FK2 Motor
- ◆ Simotics 1FK7 Motor
- ◆ Simotics 1PH8 Motor



Proximity Sensors are preferred choice for the majority of applications required accurate, non-contact detection of metallic objects in machinery or automation equipment.

Ultrasonic sensors are characterized by their reliability and outstanding versatility. Pepperl+Fuchs ultrasonic sensors have proven their reliability and endurance in virtually all industrial

Pepperl+Fuchs has continuously developed and perfected this noncontact, wear – free technology. With the highest quality standards and the most experience on the market, we offer a well – rounded portfolio of positioning systems.

Pepperl+Fuchs utilizes different technologies to provide industrial positioning systems for virtually any positioning tasks.

The actuator-sensor interface (AS-interface) replaces conventional wiring technology on the sensor-actuator level.

We Offer

- ◆ IO-Link Technology
- ◆ Inductive Positioning Systems
- ◆ Positioning Encoding System
- ◆ Data Matrix Positioning System
- ◆ Distance Sensors
- ◆ Inclination and Acceleration Sensors
- ◆ Scanners
- ◆ RFID Identification
- ◆ Barcode
- ◆ Connectivity
- ◆ Position Guided Vision
- ◆ Vision sensors
- ◆ Laser Light Sensors
- ◆ AS-I Interface
- ◆ System components in the AS-I Network
- ◆ Inductive Sensors
- ◆ Capacitive sensors
- ◆ Magnetic field sensors
- ◆ Ultrasonic Sensors
- ◆ Photoelectric Sensor
- ◆ Photo electric light grid
- ◆ Safety light curtains
- ◆ Incremental rotary encoders
- ◆ Absolute rotary encoders
- ◆ Heavy duty encoders
- ◆ Magnetic rotary encoder



In order to cater the variegated demands of our clients, we are offering an excellent quality range of Fuji AC Drives

Fuji ac drives are used in all types of machines like Fan, pump, grinder, Elevator, Lift, Hoist, Exhaust fan etc. Fuji Electric from Japan made AC Drive in heavy duty mode, Fuji AC Drives are easy to run as well as programming, we always recommend to customer for Fuji Frenic ac drives.

We are providing an excellent range of Fuji HMI. This is available in various modification facilities as per specifications of our valued clients. The product offered by us is designed in an efficient manner with highly latest technology in synchronization to the latest industrial standards.

Features

- ◆ User friendly
- ◆ Reliable
- ◆ Easy installation
- ◆ High-performance vector control enables high-speed response, high precision, and a wide range of speed control.
- ◆ Simple PTP Positioning
- ◆ Positioning via Modbus-RTU Communications
- ◆ Positioning via Di/Do signal
- ◆ Fast and accurate positioning is realized
- ◆ Reduce space
- ◆ Long life design
- ◆ Compatibility

We Offer

- ◆ AC-DRIVES
 - FVR-NEW MICRO
 - FRENIC MINI
 - FRENIC ACE
- ◆ FUJI SERVO SYSTEM
- ◆ FUJI TECHNOSHOT HMI
 - Ts1070s
 - Ts1070si
 - Ts1100si



Moving on deep knowledge and industrial experience, we are offering a very effective solution for electrical engineering.

Our high standards and strict quality control mean years of maintenance free operation for your panel application

We perform all design and engineering tasks for all hardware and software sub system.

We have professional engineering team to commissioning of panel. We also provide electrical drawing such as panel GA, BOM & Cable Layout.

We are committed to deliver in predefined time.

Features

- ◆ PLC Based Control Panel
- ◆ Control Panel With Multi Drive System
- ◆ PCC (Power Control Center)
- ◆ MCC (Motor Control Center)
- ◆ APFC Panel (Automatic Power Factor Control Panel)
- ◆ Automatic Mains Failure (AMF)
- ◆ Fully Auto and Manual Synchronizing System
- ◆ HVAC Control panel
- ◆ Auto transformer Control Panel
- ◆ Auto Battery Charger Panel
- ◆ Operator interface panel
- ◆ Distributed IO control panel
- ◆ Instrumentation Panel
- ◆ Desk / cabinet panel



NAKSH TECHNOLOGY

107, Rashmi Growth Hub Ind. Estate,
Opp. Vijay Sales Showroom, Nr. Hotel Shri Sai Palace,
S.P. Ring Road, Odhav, Ahmedabad - 380015, Gujarat, India



+91 70166 99304



info@nakshtechnology.com



www.nakshtechnology.com

SIEMENS

FE Fuji Electric

PF PEPPERL+FUCHS